

# FALLS® Client for Windows®

# *INSTALLATION GUIDE*

Version 3.2  
M210435EN-A  
August 2004



PUBLISHED BY

Vaisala Oyj  
P.O. Box 26  
FIN-00421 Helsinki  
Finland

Tel. +358 9 8949 1  
Fax +358 9 8949 2227

Visit our Internet pages at <http://www.vaisala.com/>

FOR TECHNICAL INFORMATION

Vaisala Inc.  
Tucson Operations  
2705 E. Medina Rd.  
Tucson, AZ 85706-7155  
USA

Tel. +011 520 806 7300  
Fax: +011 520 741 2848  
Toll free (US) 1 888 424 9899

© Vaisala 2003

No part of this manual may be reproduced in any form or by any means, electronic or mechanical (including photocopying), nor may its contents be communicated to a third party without prior written permission of the copyright holder.

The contents are subject to change without prior notice.

Please observe that this manual does not create any legally binding obligations for Vaisala towards the customer or end user. All legally binding commitments and agreements are included exclusively in the applicable supply contract or Conditions of Sale.

---

# Table of Contents

## Chapter 1

|                                     |          |
|-------------------------------------|----------|
| <b>GENERAL INFORMATION</b> .....    | <b>1</b> |
| <b>About This Manual</b> .....      | <b>1</b> |
| Contents of This Manual .....       | 1        |
| Version Information.....            | 2        |
| Related Manuals.....                | 2        |
| Document Conventions.....           | 2        |
| <b>Safety</b> .....                 | <b>3</b> |
| General Safety Considerations ..... | 3        |
| <b>Trademarks</b> .....             | <b>4</b> |
| <b>Copyrights</b> .....             | <b>4</b> |
| <b>License Agreement</b> .....      | <b>5</b> |
| <b>Warranty</b> .....               | <b>5</b> |
| <b>Technical Support</b> .....      | <b>5</b> |

## Chapter 2

|   |           |
|---|-----------|
| <b>INTRODUCTION</b> .....                         | <b>7</b>  |
| <b>Overview</b> .....                             | <b>7</b>  |
| <b>Supported Operating Systems</b> .....          | <b>7</b>  |
| <b>Workstation Requirements</b> .....             | <b>8</b>  |
| <b>FALLS Configurations</b> .....                 | <b>8</b>  |
| Configuration Sheet for FALLS .....               | 8         |
| Configuration Illustrations .....                 | 11        |
| Hardware Connectivity.....                        | 12        |
| FALLS Software Connectivity .....                 | 13        |
| Vaisala FALLS Server .....                        | 14        |
| SSH/Internet Connection Option .....              | 15        |
| <b>Notes about the Installation Process</b> ..... | <b>16</b> |
| Order of Operation .....                          | 16        |
| Items Needed for Installation .....               | 17        |
| Where to Begin .....                              | 17        |

## Chapter 3

|   |           |
|---|-----------|
| <b>INSTALLING AND TESTING PUTTY SSH</b> ..... | <b>19</b> |
| <b>Introduction</b> .....                     | <b>19</b> |
| <b>Preparing to Install PuTTY</b> .....       | <b>19</b> |
| <b>Installing PuTTY</b> .....                 | <b>20</b> |
| <b>Adding a PuTTY Desktop Icon</b> .....      | <b>21</b> |
| <b>Testing Connections Using PuTTY</b> .....  | <b>21</b> |

|  |           |
|--|-----------|
| Common Issues .....                                  | 22        |
| Chapter 4  |           |
| <b>INSTALLING MAPINFO PROFESSIONAL .....</b>         | <b>23</b> |
| Introduction .....                                   | 23        |
| Removing Previous MapInfo Versions.....              | 24        |
| Installing MapInfo.....                              | 25        |
| Installing DBMS ODBC Support .....                   | 27        |
| Installing Optional MapInfo Components .....         | 29        |
| Chapter 5  |           |
| <b>INSTALLING SYBASE OPEN CLIENT WITH ODBC .....</b> | <b>31</b> |
| Introduction .....                                   | 31        |
| Verifying the Open Client Version .....              | 32        |
| Uninstalling Sybase Open Client.....                 | 33        |
| Running the Sybase Open Client Installer.....        | 33        |
| Chapter 6  |           |
| <b>TESTING SYBASE CONNECTIVITY .....</b>             | <b>37</b> |
| Testing Sybase Open Client Connectivity .....        | 37        |
| Testing MapInfo/ODBC/Sybase Connectivity .....       | 38        |
| Chapter 7  |           |
| <b>INSTALLING FALLS CLIENT .....</b>                 | <b>41</b> |
| Prerequisites .....                                  | 41        |
| Installing FALLS Client.....                         | 41        |
| Disabling the Windows Update Feature.....            | 43        |
| <b>INDEX.....</b>                                    | <b>45</b> |

---

# List of Figures

|           |  |    |
|-----------|--|----|
| Figure 1  | Hardware Connectivity for Local FALLS Server .....       | 12 |
| Figure 2  | FALLS Software Connectivity .....                        | 13 |
| Figure 3  | Vaisala Sybase Server.....                               | 14 |
| Figure 4  | SSH/Internet Connection Option.....                      | 15 |
| Figure 5  | PuTTY Window—after Connection .....                      | 22 |
| Figure 6  | Open Client Version—Windows 2000.....                    | 32 |
| Figure 7  | No Open Client Is Found—Windows 98 .....                 | 32 |
| Figure 8  | tclsh.exe Window—Windows 2000.....                       | 35 |
| Figure 9  | Status Message Indicating a Successful Ping Action ..... | 38 |
| Figure 10 | FALLS Icon .....   | 43 |

This page intentionally left blank.

# List of Tables

|         |   |    |
|---------|---|----|
| Table 1 | Manual Revisions.....                         | 2  |
| Table 2 | Related Manuals .....                         | 2  |
| Table 3 | Document Conventions.....                     | 2  |
| Table 4 | FALLS Connection Options .....                | 7  |
| Table 5 | Possible FALLS Client Configurations .....    | 8  |
| Table 6 | Installation—Order of Operation .....         | 16 |
| Table 7 | MapInfo Installation—Order of Operation ..... | 24 |

This page intentionally left blank.

# CHAPTER 1

## GENERAL INFORMATION

### About This Manual

This manual addresses the requirements and procedures for installing the FALLS® Client application for Windows® operating systems. The manual assumes a thorough working knowledge of the Windows operating system on which the FALLS software is installed.

The Windows operating systems provide many user-configurable display and desktop options, so screens may differ somewhat from one system to another. Therefore, the screen images used in this document may appear slightly different than what appears on your screen. However, the procedures and information needed to complete a proper installation are as indicated in the text of this manual.

### Contents of This Manual

This manual consists of the following chapters:

- Chapter 1, General Information, provides important safety, revision history, contact, and warranty information for the product.
- Chapter 2, Introduction, provides information regarding system requirements, items needed for the installation, the FALLS Configuration Sheet, and system configuration illustrations.
- Chapter 3, Installing and Testing PuTTY SSH, provides information on installing Secure Shell protocols.
- Chapter 4, Installing MapInfo Professional, provides information on installing the MapInfo® software.

- Chapter 5, Installing Sybase Open Client with ODBC, provides information on installing related ODBC software.
- Chapter 6, Testing Sybase Connectivity, provides information on testing connectivity between the workstation and the lightning database.
- Chapter 7, Installing FALLS Client, provides information on installing the FALLS software.

## Version Information

**Table 1 Manual Revisions**

| Manual Code    | Description                      |
|----------------|----------------------------------|
| 40147 REV 9705 | FALLS version 2.0.0              |
| 40147 REV 9710 | FALLS version 2.x.x              |
| 40147 REV 9801 | FALLS version 2.x.x              |
| 40147 REV 9811 | FALLS version 2.x.x              |
| 40147 REV 9910 | FALLS version 3.0.0              |
| 45412 REV 0005 | FALLS version 3.1.0              |
| 45469 REV 0105 | FALLS version 3.2.0              |
| 45522 REV 0302 | FALLS version 3.2.0, MapInfo 7.0 |
| M210435EN-A    | This manual                      |

## Related Manuals

**Table 2 Related Manuals**

| Manual Code | Manual Name                        |
|-------------|------------------------------------|
| 40119 Rev C | FALLS User's Guide                 |
| 40201 Rev B | FALLS System Administrator's Guide |

## Document Conventions

Different typefaces, type styles, and phraseology indicate specific user interactions with the system as illustrated in Table 3 below.

**Table 3 Document Conventions**

| Item   | Example                  |
|--|--------------------------|
| System prompts, source code, and program output are in a mono-spaced typeface. | <code>c:\temp&gt;</code> |
| User input is a bold, mono-spaced typeface.                                    | <b>volcheck</b>          |
| Optional entry is enclosed in square brackets (for example, /v).               | format a: [/v]           |

**Table 3 Document Conventions (Continued)**

| Item  | Example   |
|---|---|
| Descriptive term used in place of user-specific name is in italics and enclosed in angle brackets (for example, table). | the <table>.map file                                |
| Key names are all capital letters.  | ENTER   |
| Use of ENTER key at the end of a command  | <ENTER>   |
| Key combinations that are held down simultaneously are all capital letters and separated by a plus symbol.              | CTRL+X  |
| ASCII values are enclosed in angle brackets.  | <CR><LF>  |
| User interface items and command words are in bold.   | Click <b>Cancel</b> or use the <b>quit</b> command. |

## Safety

### General Safety Considerations

Throughout the manual, important safety considerations are highlighted as follows:

#### **WARNING**

Warning alerts you to a serious hazard. If you do not read and follow instructions very carefully at this point, there is a risk of injury or even death.

#### **CAUTION**

Caution warns you of a potential hazard. If you do not read and follow instructions carefully at this point, the product could be damaged or important data could be lost.

#### **NOTE**

Note highlights important information on using the product.

## Trademarks

Vaisala and the Vaisala logo are registered trademarks of Vaisala Oyj in the United States and/or other countries.

FALLS is a registered trademark of Global Atmospheric, Inc.

Microsoft, Windows, and Windows NT are trademarks or registered trademarks of Microsoft Corporation in the United States and/or other countries.

MapInfo, MapInfo Professional, and the MapInfo logo are registered trademarks of MapInfo Corporation.

Sybase, the Sybase logo, Sybase SQL, and Open Client are trademarks of Sybase Incorporated.

Sun, the Sun logo, and Solaris are trademarks, registered trademarks or service marks of Sun Microsystems, Incorporated in the United States and other countries.

Adobe, the Adobe logo, Acrobat, and Reader are registered trademarks, or trademarks of Adobe Systems, Incorporated in the United States and/or other countries.

UNIX is a registered trademark in the United States and other countries, exclusively licensed through X/Open Company Limited.

Intel, the Intel logo, and Pentium are trademarks or registered trademarks of the Intel Corporation or its subsidiaries in the United States and other countries.

All other company and product names used herein may be the trademarks or registered trademarks of their respective companies.

## Copyrights

ADC WorldMap courtesy of American Digital Cartography, Inc. ADC WorldMap is copyrighted by, and is a registered trademark of, American Digital Cartography, Inc., 3003 W. College Avenue, Appleton, WI 54914-2910.

PuTTY® is copyrighted 1997-2001 Simon Tatham. Portions copyright Robert de Bath, Joris van Rantwijk, Delian Delchev, Andreas Schultz, Jeroen Massar, Wez Furlong, Nicolas Barry, and CORE SDI S.A.

## License Agreement

All rights to any software are held by Vaisala or third parties. The customer is allowed to use the software only to the extent that is provided by the applicable supply contract or Software License Agreement.

## Warranty

For certain products Vaisala normally gives a limited one year warranty. Please observe that any such warranty may not be valid in case of damage due to normal wear and tear, exceptional operating conditions, negligent handling or installation, or unauthorized modifications. Please see the applicable supply contract or conditions of sale for details of the warranty for each product.

## Technical Support

For technical support, return authorization (RMA), repair status, and spare parts, contact the Customer Response Center.

Tel: 1 888 424 9899 (within USA & Canada)  
+011 520 294 2145 (international)

E-mail: [thunderstorm.support@vaisala.com](mailto:thunderstorm.support@vaisala.com)  
[thunderstorm.netsupport@vaisala.com](mailto:thunderstorm.netsupport@vaisala.com)

This page intentionally left blank.

## CHAPTER 2

# INTRODUCTION

## Overview

This manual addresses the requirements and procedures for installing and configuring the FALLS Client software. The FALLS Client software accesses lightning data from a FALLS Server. Table 4 below indicates the three options available for connecting to a FALLS Server.

**Table 4** FALLS Connection Options

| <b>Server being Accessed</b>                               | <b>Client/Server Communication Protocol</b> |
|--|---|
| LAN or WAN Solaris® workstation with FALLS Server software | TCP/IP                                      |
| Vaisala FALLS Server                                       | TCP/IP and SSH/Internet option              |
| Vaisala FALLS Server                                       | Point-to-point dial-up modem                |

## Supported Operating Systems

FALLS Client runs on and has been tested with the following operating systems:

- Windows® 2000, or Windows® 2000 with Service Pack 2 (referred to as Windows 2000)
- Windows NT® 4.0 with Service Pack 3, 4, 5, 6 or 6a (referred to as Windows NT)
- Windows® 98 Second Edition only (referred to as Windows 98)

## Workstation Requirements

The minimum computer requirements for FALLS Client are:

- Pentium® class CPU with 100 Mhz clock
- Windows 2000, Windows NT, or Windows 98 operating system
- 128 Mb RAM (256 Mb is recommended)
- 500 Mb free storage for FALLS applications (Data storage is additional)
- CD-ROM and floppy disk drives
- Monitor and video card capable of 800×600 dpi resolution and 256 colors
- Keyboard and pointing device
- TCP/IP network connectivity (for access to local FALLS Server or to Vaisala FALLS Server using SSH/Internet option)
- HTML web browser installed

When running FALLS, set the monitor resolution to at least 800×600, with 256 colors.

## FALLS Configurations

The current version of FALLS Client supports the configurations indicated by Table 5 below.

**Table 5 Possible FALLS Client Configurations**

| Operating System | MapInfo 5.5     | MapInfo 6.0 | MapInfo 7.0 |
|------------------|-----------------|-------------|-------------|
| Windows 98       | Y <sup>1)</sup> | Y           | Y           |
| Windows 2000     | Y               | Y           | Y           |
| Windows NT       | Y               | Y           | Y           |

1) Indicates configuration is supported.

## Configuration Sheet for FALLS

Make a copy of the FALLS Configuration Sheet (page 9 and page 10) for each FALLS user, fill it out, and have it at hand while installing and configuring the FALLS Client. Each FALLS user on a workstation must have a separate Configuration Sheet.

## FALLS CONFIGURATION SHEET

Complete both sides for each user on each FALLS Client workstation.

### Client Workstation

[1] Installation date

[2] User account name

[3] OS type and version

[4] Service pack number

[5] Workstation name

[6] IP address

[7] CD-ROM drive letter

[8] Installation drive letter

[9] MapInfo installation directory

[10] MapInfo version

[11] MapInfo serial number

[12] FALLS installation directory

### Sun® Workstation (FALLS Server)

[13] Host name

[14] IP address

[15] SQL server name

[16] SQL server port

[17] SQL server account name

[18] UNIX® login account name

[19] FALLS build number

**Notes:**

**SSH Information**

Refer to the config.txt or the settings.txt file on the PuTTY Win32 Telnet/SSH Client CD for details.

**Installation Checklist**

Complete from left to right.

- |   |  |
|---|--|
| <input type="checkbox"/> A. Installed optional SSH software     | <input type="checkbox"/> B. Installed MapInfo                          |
| <input type="checkbox"/> C. Installed MapInfo DBMS ODBC Support | <input type="checkbox"/> D. Installed Sybase Open Client & ODBC Driver |
| <input type="checkbox"/> E. Tested Sybase connectivity          | <input type="checkbox"/> F. Tested MapInfo/ODBC/Sybase connectivity    |
| <input type="checkbox"/> G. Installed FALLS                     | <input type="checkbox"/> H. Logged in to FALLS to test                 |

Please fax a copy of the completed form (both sides) to the Customer Response Center at Vaisala (Fax: 1-520-741-2848) when complete.

**Notes:**

Fill out as much information on the form as possible before starting the installation procedure. Obtain information about the FALLS Server from your network administrator, your Sybase administrator, or by contacting the Vaisala Customer Response Center. If your FALLS Server is in your local network, obtain the server information from your network or Sybase administrator. If you are accessing the Vaisala FALLS Server, the server information is in the config.txt file on the PuTTY Win32 Telnet/SSH Client CD.

## Configuration Illustrations

The following illustrations have been included to help you visualize what your chosen system configuration includes.

See Figure 1 on page 12 for an illustration depicting the hardware connections for a local FALLS server.

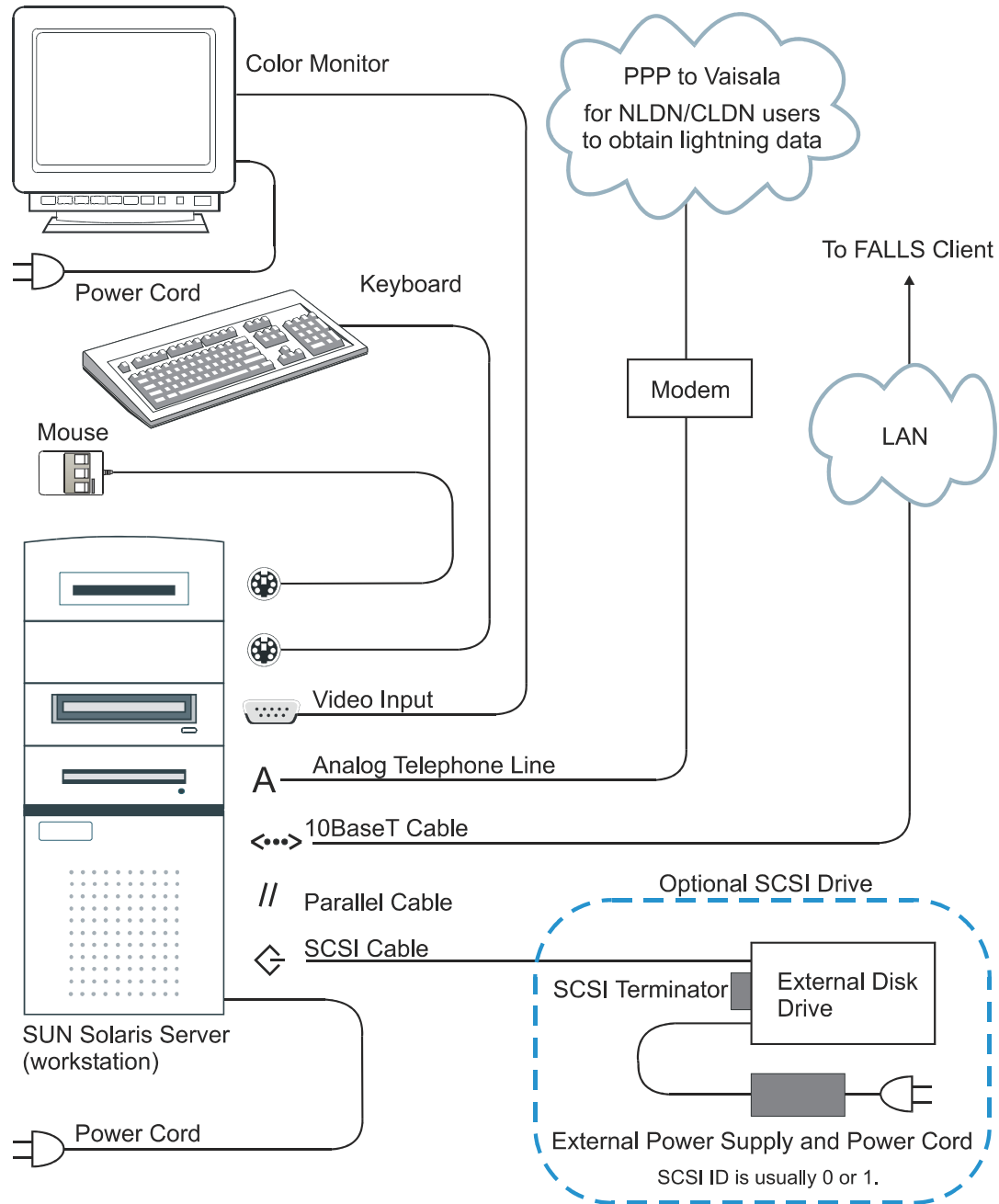
See Figure 2 on page 13 for an illustration depicting various files and components used by FALLS.

See Figure 3 on page 14 for an illustration depicting the Vaisala FALLS Server.

See Figure 4 on page 15 for an illustration depicting the SSH/Internet FALLS Client connection option.

## Hardware Connectivity

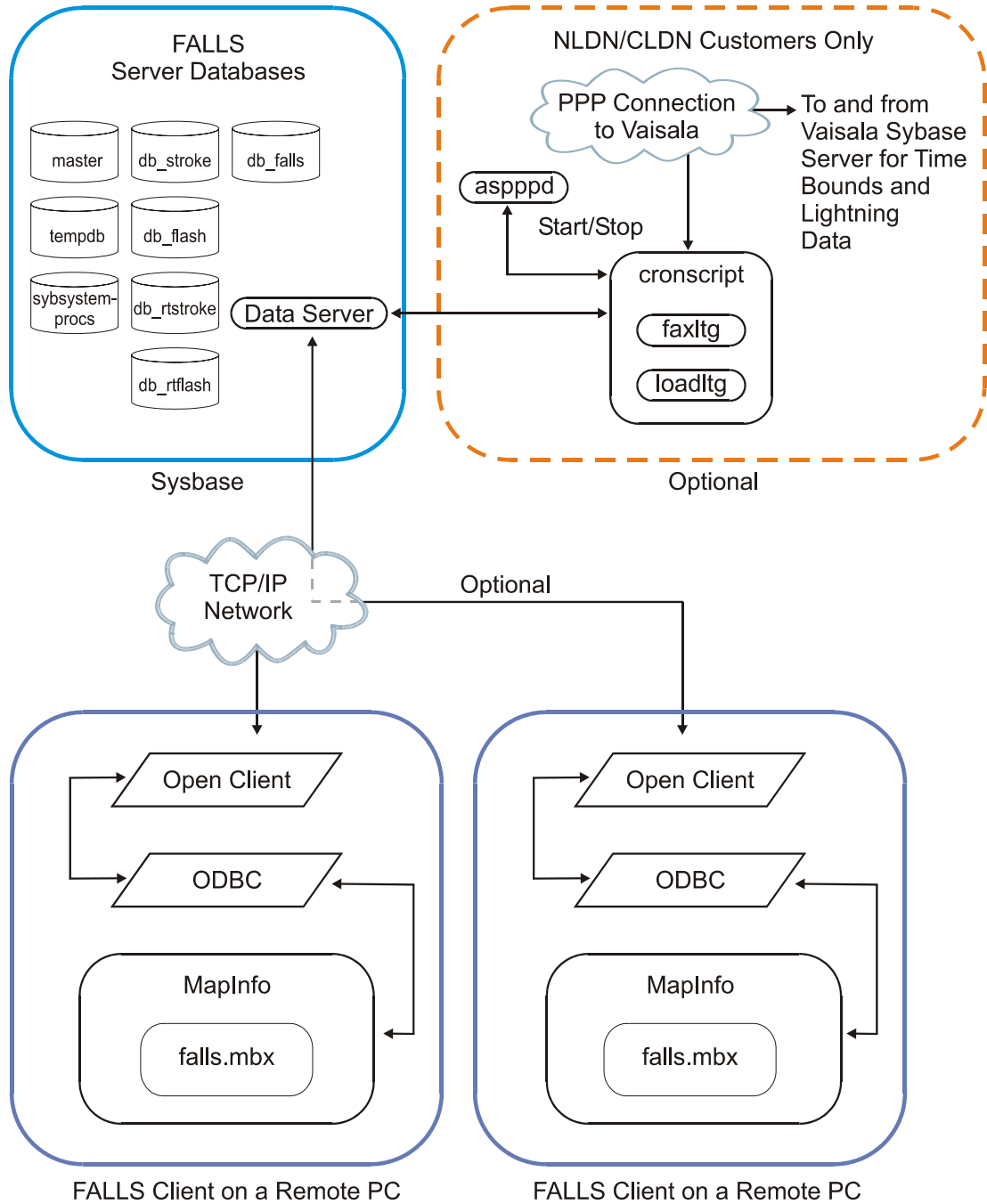
Figure 1 below depicts the various hardware connections for a local FALLS Server and optional components.



**Figure 1 Hardware Connectivity for Local FALLS Server**

### FALLS Software Connectivity

Figure 2 below depicts various files and software components used by FALLS and a local server.

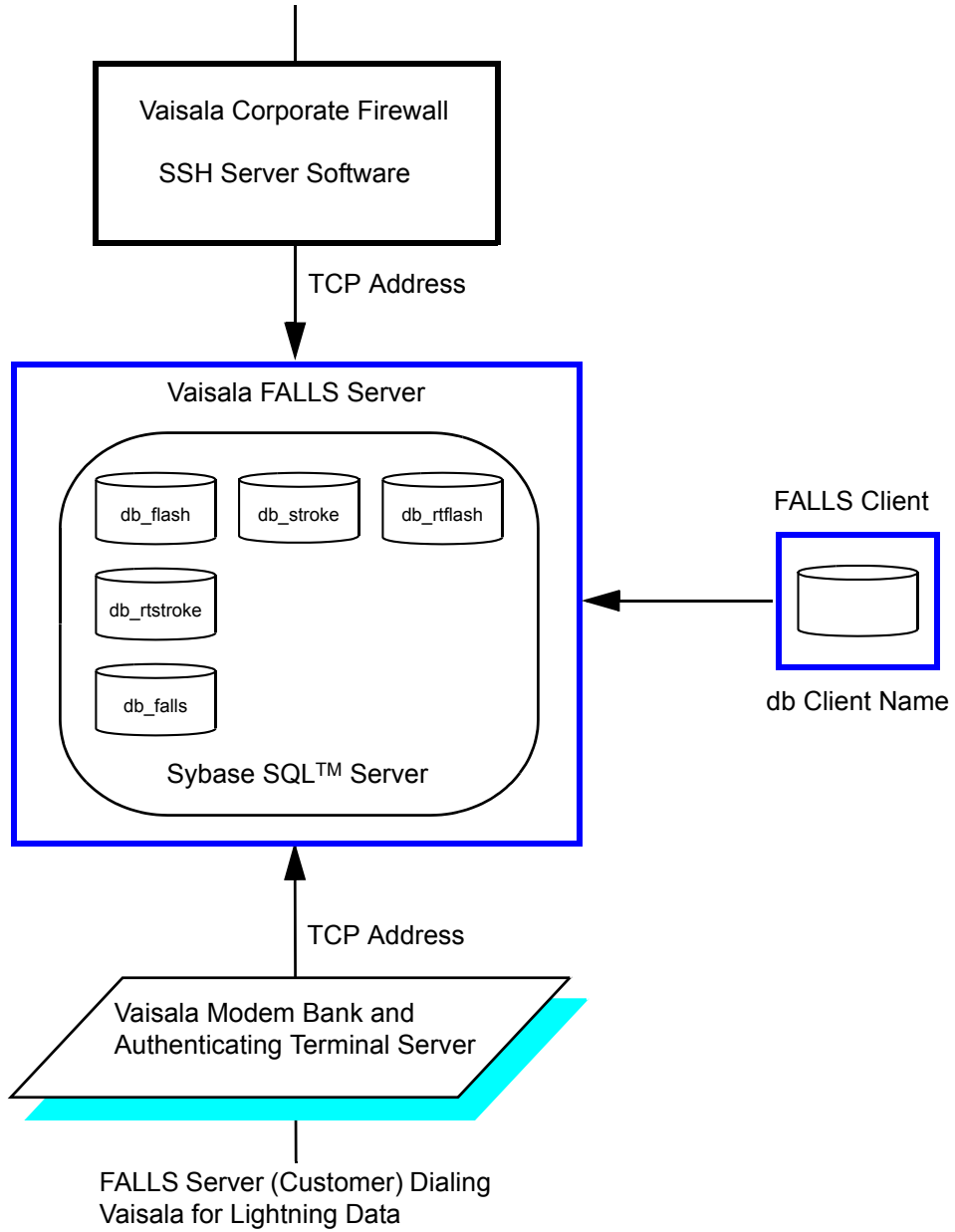


**Figure 2 FALLS Software Connectivity**

## Vaisala FALLS Server

Figure 3 below depicts the Vaisala FALLS Server.

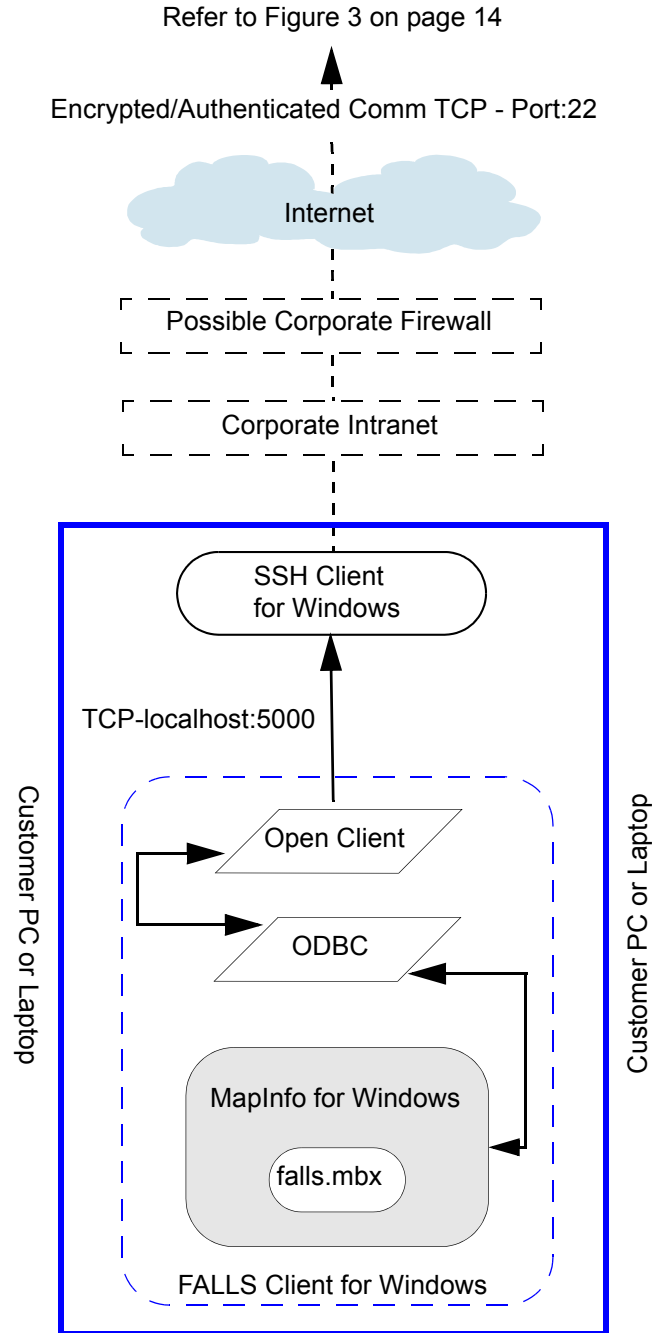
From SSH/VPN Internet Connection Option (Figure 4 on page 15)



**Figure 3 Vaisala Sybase Server**

### SSH/Internet Connection Option

Figure 4 below depicts the SSH/Internet connection option to the Vaisala FALLS Server.



**Figure 4** SSH/Internet Connection Option

## Notes about the Installation Process

Some installation procedures vary with the operating system installed on your workstation. The procedures indicate the differences. Follow steps appropriate to your operating system. For operating system functions, follow the instructions provided by Microsoft® documentation.

Your drive designations may be different letters than those used by procedures in this manual. Be sure to substitute your drive designations appropriately when called for by a procedure or step.

The FALLS Client software requires the installation and configuration of the TCP/IP protocol. Refer to the Windows Resource Kit or Windows Help for information regarding TCP/IP installation and configuration.

The acronyms ODBC (open database connectivity) and DBMS (database management systems) are used interchangeably throughout this document. This reflects software manufacturer database naming conventions.

**Windows 98:** After any system change, running diagnostics, or installing or uninstalling software, reboot your system and ensure that it boots properly to the Windows desktop.

## Order of Operation

The installation process requires that you follow procedures in the order shown in Table 6 below.

**Table 6 Installation—Order of Operation**

| Step | Procedure   |
|------|---|
| 1    | Install SSH (secure shell) technology protocols (Chapter 3)                         |
| 2    | Install MapInfo Professional® (Chapter 4)<br>(Refer to Table 7 for greater detail.) |
| 3    | Install Sybase™ Open Client™ with ODBC support (Chapter 5)                          |
| 4    | Test Sybase connectivity (Chapter 6)  |
| 5    | Install FALLS (Chapter 7)   |

## Items Needed for Installation

Before beginning, be sure you have the following:

- To install FALLS Client and FALLS-related applications on a workstation running the Windows 2000 or Windows NT operating system, you need a FALLS user with administrative privileges for the workstation.
- Throughout the installation process it is recommended that you have the operating system installation CD-ROM and/or diskettes, along with their respective manuals, available.
- MapInfo® Installation CD along with respective documentation
- Completed FALLS Configuration Sheet (both sides)
- PuTTY Win32 Telnet/SSH Client CD along with respective documentation
- FALLS Client for Windows CD along with respective documentation. Refer to the FALLS Release Notes (located on the FALLS Client for Windows CD under FALLS Installation Requirements), for any additional requirements.

## Where to Begin

If you are using the Vaisala FALLS Server to obtain lightning data, proceed to Chapter 3.

If you are using a local network FALLS Server to obtain lightning data, proceed to Chapter 4.

This page intentionally left blank.

## CHAPTER 3

# INSTALLING AND TESTING PUTTY SSH

## Introduction

This chapter explains the installation and configuration of SSH (secure shell) communications protocols used by FALLS Client (your workstation) to transfer data from the Vaisala FALLS Server. PuTTY is the only SSH application that Vaisala supports. SSH communications are needed only for FALLS configurations that acquire lightning data from the Vaisala FALLS Server instead of a local network FALLS Server.

If you acquire lightning data from a local FALLS Server on your company network, proceed to Chapter 4.

## Preparing to Install PuTTY

### **Before installing the SSH client:**

- Uninstall any SSH application and/or earlier version of PuTTY.
- Close all running applications.

# Installing PuTTY

To install PuTTY, you may be logged in as the user who will be running FALLS. Administrative rights are not required to install on the Windows NT or Windows 2000 operating systems.

## To install the PuTTY Telnet/SSH Client software:

1. Insert the PuTTY Win32 Telnet/SSH Client CD into the CD-ROM drive. The installer HTML page displays and includes the Readme, Author's license, and PuTTY.exe links.
2. If the browser does not start the ReadMe.txt file automatically:
  - Open Windows Explorer, locate the PuTTY Win32 Telnet/SSH Client CD, and double-click the ReadMe.txt file.
3. In the **PuTTY SSH** window, click the **PuTTY.exe** link to begin the installation process. If the link is broken, do one of the following:
  - Open Windows Explorer, locate the PuTTY Win32 Telnet/SSH Client CD, and double-click the PuTTY.exe file.
  - On the desktop, click **Start** then click **Run** to display the **Run** dialog box. Enter the CD-ROM drive letter (Configuration Sheet, item 7) followed by **: \PuTTY.exe**.

For example, if the CD-ROM drive is D, enter:

**D: \PuTTY.exe**

4. If the **File Download** dialog box displays, select the **Run this program from its current location** option.
  - The **File Download** dialog box may not display depending upon your browser configuration.
5. Follow the instructions in the installer.
6. When a dialog box displays indicating the installation is complete, click **OK**.
7. You are returned to the main PuTTY SSH.htm file. Ensure that you review the information provided by the Readme and Author's license links.

## Adding a PuTTY Desktop Icon

### To display a desktop icon for PuTTY:

1. On the desktop, click **Start**, point to **Programs**, point to **PuTTY SSH**, then right-click **PuTTY**.
2. Click **Create Shortcut**.

## Testing Connections Using PuTTY

Each PuTTY Win32 Telnet/SSH Client CD is customized for the customer. A customer encryption key is on each installation CD, and is installed and configured automatically by the PuTTY installer.

### To connect (open) an SSH session:

If using a company network, proceed to step 2.

1. For dial-up/modem access, establish a dial-up connection to your ISP. Consult your Windows documentation and ISP for help.
2. On the desktop, click **Start**, point to **Programs**, point to **PuTTY SSH**, then click **PuTTY**.
3. Select the appropriate item from the **Saved Session** list, click **Load**, and click **Open**. When you connect, a window displays indicating that a connection is established (Figure 5 on page 22). If you cannot connect, refer to section Common Issues on page 22.
4. Type **exit** to close the connection. Continue with Chapter 4.

### NOTE

The account is now ready to be accessed using public key authentication from a FALLS Client workstation with the correct identity files. If the public key authentication fails, SSH reverts to password authentication and prompts you for a password. This indicates a problem with the public or private key authorization. Should this occur, contact the Customer Response Center.

Figure 5 shows a PuTTY terminal window titled "Connected to Vaisala-GAI via SSH". The terminal displays the following text: "Sent username 'ced3'", "Trying public key authentication.", "No passphrase required.", "Last login: Tue Sep 17 19:13:27 2002 from m020-fw2.conedt", "This computer system for authorized use only", "Connected to GAI distributor.glatmos.com", "Your port redirections are currently running.", and "Type 'exit' to close this connection." A green cursor is visible at the bottom left of the terminal.

**Figure 5** PuTTY Window—after Connection

## Common Issues

The SSH protocol uses Port 22. This port must be configured for bi-directional traffic. All traffic on Port 22 is encrypted using the SSH software, therefore opening this port poses no security risks.

### NOTE

If you are using a company network to communicate to the Vaisala FALLS Server, see your Information Technologies Manager or Systems Administrator about configuring Port 22. If you are using a cable modem or DSL to communicate, refer to the manuals for those devices to configure Port 22.

FALLS needs to connect to an ODBC data source that points to localhost port 5000. The configuration of an ODBC data source to localhost port 5000 is detailed in Chapter 4. SSH forwards all traffic for localhost port 5000 so FALLS Client connects across the Internet to the Vaisala FALLS Server.

## CHAPTER 4

# INSTALLING MAPINFO PROFESSIONAL

## Introduction

Two types of installation for MapInfo Professional and its components are possible: new user and upgrade. The new user installation assumes you have no previous versions of MapInfo Professional or its components on your hard drive. The upgrade installation assumes you have a previous version of MapInfo Professional installed. The upgrade installation requires removing previous versions before installing the new version.

**CAUTION**

If you are upgrading MapInfo, refer to the MapInfo documentation for data and settings management. The new version of MapInfo has a different directory structure than earlier versions. Therefore, you may need to move files such as Custom Symbols before upgrading MapInfo.

The MapInfo CD includes all MapInfo documentation as Acrobat PDF files, as well as a copy of Acrobat® Reader®. If Acrobat Reader is not on your CD, download the latest version from the Adobe® Web site. Table 7 on page 24 describes the order of operation for installing

MapInfo. MapInfo must be installed prior to installing the FALLS Client software.

**Table 7 MapInfo Installation—Order of Operation**

| Operation  | Remarks   |
|--|---|
| Determine which type of installation you are performing. | New user<br>Upgrade   |
| Fill out the FALLS Configuration Sheet (2 pages).        | Refer to Chapter 2, Introduction, for details.  |
| Prepare for the installation.                            | New user—keep Sybase and SSH software installed.<br>Upgrade—remove previous MapInfo versions according to section Removing Previous MapInfo Versions on page 24.      |
| Install MapInfo.   | Refer to this Installation Guide for details on the appropriate installation procedures. Be sure to register your product with MapInfo at the earliest date possible. |
| Install MapInfo DBMS support.                            |   |
| Install MapInfo DAO-ODBC support.                        |   |
| Install MapInfo Data (optional).                         |   |
| Install MapInfo Utilities (optional).                    |   |
| Install all MapInfo patches.                             | Obtain patch upgrades from the MapInfo Web site and follow the instructions included in the Readme.txt files.   |
| Test system connectivity.                                | Refer to Chapter 6, Testing Sybase Connectivity, for details on testing procedures.   |

## Removing Previous MapInfo Versions

**To remove previous versions of MapInfo and related files:**

1. Review the installation procedures provided in the MapInfo documentation.
2. Properly remove (uninstall) the following applications:
  - MapInfo Professional
  - MapInfo DBMS Support
  - Data Access Objects (DAO) 3.5 (used by MapInfo Professional 5.5)
  - MapInfo MDAC-DAO-ODBC (used by MapInfo Professional 6.0)

Installing a new version of MapInfo in the same MapInfo directory as a previous version, without properly removing the above applications, may generate an error message. This will halt the installation.

Refer to your Windows documentation or the Microsoft Web sites (support.microsoft.com or microsoft.com) for information describing the addition and removal of application files.

## Installing MapInfo

To maintain separate custom information and files, one copy of MapInfo must be installed for each FALLS user on the workstation. MapInfo must be installed prior to installing the FALLS Client software. For FALLS to operate correctly, three components from the MapInfo Professional CD must be properly installed and configured, the remaining two are optional:

- MapInfo Professional
- MapInfo 32-bit DBMS support
- MapInfo DAO-ODBC support
- MapInfo Data (optional)
- MapInfo Utilities (optional)

When installing MapInfo on Windows NT or Windows 2000 operating systems, the installer must be logged on to the workstation as the user who will be running FALLS. That user must be assigned administrator rights. After installation of FALLS Client, administrator rights can be deleted for that user, if necessary.

**NOTE**

Before installing MapInfo, be sure that all prior MapInfo components have been removed (see section Removing Previous MapInfo Versions on page 24), and that you have read the installation instructions in the MapInfo documentation.

**To install MapInfo:**

If you are using Windows 98, proceed to step 2.

1. If installing on Windows 2000 or Windows NT, log on to Windows as the FALLS user with administrator rights.
2. Record the drive letter for your CD-ROM drive on your Configuration Sheet at item 7.
3. On the Configuration Sheet at item 8, record the drive letter for the drive on which you are installing each of the following:
  - MapInfo Professional
  - DBMS
  - Sybase Open Client

- FALLS and related data
- 4. It is recommended that you exit all Windows applications before installing MapInfo.
- 5. Insert the MapInfo Professional CD into the CD-ROM drive. The **MapInfo Professional CD Browser** displays. If the browser does not start automatically, do one of the following:
  - Open Windows Explorer, locate the MapInfo CD, and double-click the setup.exe file.
  - On the desktop, select **Start** and click **Run** to display the **Run** dialog box, and enter the CD-ROM drive letter (Configuration sheet, item 7) followed by **: \setup.exe**.

For example, if the CD-ROM is drive D, enter:

**D: \setup.exe**

- 6. Click **Install Products**.
- 7. In the **Install Products** screen, click **MapInfo Professional**. A message displays indicating that MapInfo is preparing to install on your machine.

**NOTE**

Use the **Back** button, rather than the **Exit** button to return to the **MapInfo CD Browser** screen after each component is installed.

- 8. In the **MapInfo Professional 7.0 - InstallShield Wizard Welcome** dialog box, click **Next**.
- 9. In the **License Information** dialog box, read the terms and, if you agree, select **I accept the terms**.
- 10. Click **Next**. The **Customer Information** dialog box displays.
- 11. Enter the applicable information in the appropriate text fields for:
  - User Name
  - Organization
  - MapInfo CD serial number
- 12. After entering the information, click **Next**. The **Setup Type** dialog box displays.
- 13. Select **Typical Workstation installation** and click **Next**. The **Custom Setup** dialog box displays.

14. Click **Next**. The **Ready to Install the Program** dialog box displays.
15. Click **Install**. A message box indicating the status of the installation displays.
16. When the installation nears completion, you are presented the option of connecting to the MapInfo Web site to check for updates. Although you should check the Web site periodically for updates, the updating procedure is best done after all components have been installed.
17. Click **No**. The **Installation Complete** dialog box displays.
18. Click **Finish**. When the installation is completed, you are returned to the **MapInfo Professional Install Products** screen.
19. To install ODBC drivers, continue with section Installing DBMS ODBC Support at step 5 on page 27. To exit to the desktop, click **Exit**.

## Installing DBMS ODBC Support

### To install MapInfo DBMS ODBC Support:

If the MapInfo installer is running, go to step 2.

1. Insert the MapInfo Professional CD into the CD-ROM drive. The **MapInfo Professional CD Browser** displays.
  - If the browser does not display automatically, access the setup.exe file as described in step 5 on page 26.
2. Click **Install Products**. The **Install Products** screen displays.
3. Click **DBMS Support**.
4. A **MapInfo RDBMS Support** screen displays possible support choices.
5. Click **Install DBMS Support**. The **MapInfo 32bit DBMS 7.0 Support** dialog box displays.
6. Click **Next**. The **License Agreement** dialog box displays.
7. To accept the agreement, click **Yes**. The **Setup Type** dialog box displays.
8. Select **MapInfo Professional Version 7.0 or later**.
9. Click **Next**. The **Choose Destination Location** dialog box displays.

10. Ensure that DBMS support is installed in the same folder as MapInfo was.
11. Click **Next**. The **Select Components** dialog box displays.
12. Select the following options:
  - **MapInfo ODBC Connectivity Support**
  - **MapInfo DAO (MS Access) Support**
13. Click **Next**. The installation process begins and several messages are displayed during this time period. The **MapInfo DAO-ODBC Welcome** dialog box displays.
14. Click **Next**. The **Select Components** dialog box displays.
15. Select nothing. If an item is inadvertently selected, clear the selection.

**CAUTION**

Do not select an ODBC driver. Vaisala provides Sybase ODBC drivers for use with FALLS. Instructions for installing the Sybase ODBC drivers begin with section Verifying the Open Client Version on page 32.

16. Click **Next**. An **Install Status** message displays indicating the progress of the installation. Once completed, the **InstallShield Wizard Complete** dialog box displays.
17. Click **Finish**. You are returned to the **MapInfo RDBMS Support** screen.
18. Click **Exit**.
19. Leave the MapInfo Professional CD in the CD-ROM drive if other MapInfo components need to be installed. Otherwise, remove the CD.
20. Restart your workstation.
21. You have completed the MapInfo installation. Continue with Chapter 6, Testing Sybase Connectivity, or proceed to section Installing Optional MapInfo Components to install additional MapInfo components.

## Installing Optional MapInfo Components

Optional MapInfo components, such as data and utilities not related to FALLS, can be installed. Refer to MapInfo documentation and follow the recommended installation procedures. After you have installed the needed components, proceed to Chapter 6, Testing Sybase Connectivity.

Click the **Get More Data** link provided in the **MapInfo Data** screen to obtain information and specifications on the data sets provided at the MapInfo Web site. An Internet connection is needed to obtain data.

This page intentionally left blank.

## CHAPTER 5

# INSTALLING SYBASE OPEN CLIENT WITH ODBC

## Introduction

Before starting this chapter, ensure that MapInfo and MapInfo DBMS Support are properly installed. If you are unsure and want to verify the installation, refer to section Testing MapInfo/ODBC/Sybase Connectivity on page 38 for details on verifying the connection.

**NOTE**

The procedures in this chapter are the same for the Windows 2000, Windows NT, and Windows 98 operating systems.

The current FALLS version supports Sybase Open Client 11.1.1 paired with Sybase ODBC Driver 3.11 (a repackaging of version 3.11 of the INTERSOLV driver).

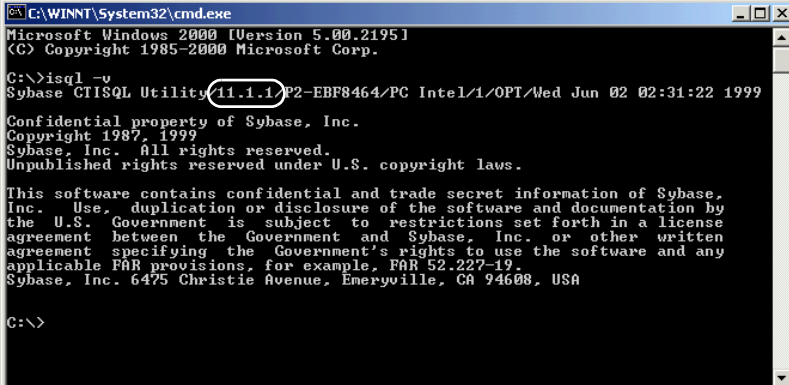
Ensure that you have an HTML browser installed and properly configured prior to beginning the installation procedure.

FALLS Release Notes are included as a PDF file on the FALLS Client for Windows CD.

## Verifying the Open Client Version

To verify the version of Open Client running on your workstation:

1. Using the procedures appropriate to your operating system, go to the command prompt.
2. Type `isql -v` and check the first response line.



```
C:\WINNT\System32\cmd.exe
Microsoft Windows 2000 [Version 5.00.2195]
(C) Copyright 1985-2000 Microsoft Corp.

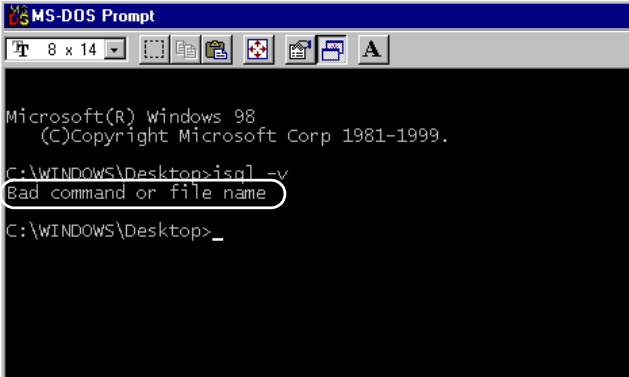
C:\>isql -v
Sybase CTISQL Utility(11.1.1)P2-EBF8464/PC Intel/1/OPT/Med Jun 02 02:31:22 1999
Confidential property of Sybase, Inc.
Copyright 1987, 1999
Sybase, Inc. All rights reserved.
Unpublished rights reserved under U.S. copyright laws.

This software contains confidential and trade secret information of Sybase,
Inc. Use, duplication or disclosure of the software and documentation by
the U.S. Government is subject to restrictions set forth in a license
agreement specifying the Government's rights to use the software and any
applicable FAR provisions, for example, FAR 52.227-19.
Sybase, Inc. 6475 Christie Avenue, Emeryville, CA 94608, USA

C:\>
```

**Figure 6** Open Client Version—Windows 2000

- If the line displays 11.1.1 (see Figure 6 above), you have the current version.
- If the line displays a version earlier than 11.1.1, remove the earlier version as directed in section Uninstalling Sybase Open Client on page 33.
- If text displays similar to that shown in Figure 7 below, Sybase Open Client is not installed. Continue with section Running the Sybase Open Client Installer on page 33.



```
MS-DOS Prompt
Microsoft(R) Windows 98
(C)Copyright Microsoft Corp 1981-1999.

C:\WINDOWS\Desktop>isql -v
Bad command or file name

C:\WINDOWS\Desktop>_
```

**Figure 7** No Open Client Is Found—Windows 98

## Uninstalling Sybase Open Client

If you have a version of Sybase Open Client earlier than 11.1.1, remove it before installing a newer version. Refer to the Windows Help file for details on adding and removing applications.

Items to be removed include:

- Sybase Client software
- Client library
- Language modules

If these are not removed properly by the Windows Add/Remove Programs application, contact the Customer Response Center regarding a script included with FALLS to facilitate removal of these items.

## Running the Sybase Open Client Installer

You need the following information from your Configuration Sheet for this installation:

- Workstation name, item 5
- Drive letter of CD-ROM drive, item 7
- Drive letter for Sybase installation drive, item 8
- FALLS Server IP address, item 14
- Sybase SQL server name, item 15
- Sybase SQL server port, item 16

### **To install Sybase Open Client on Windows:**

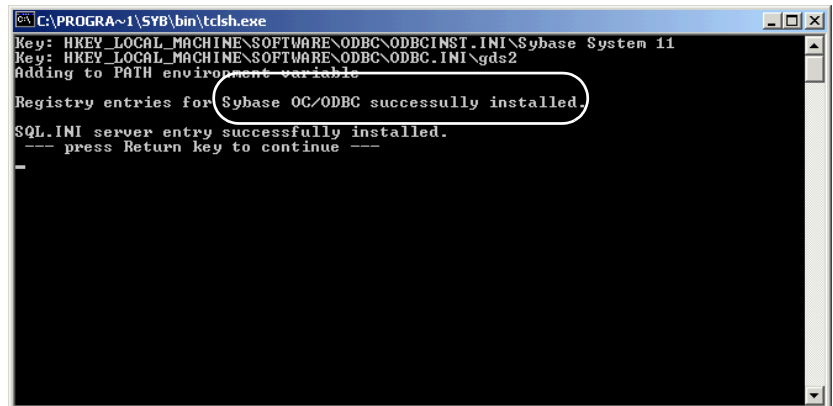
If you are using Windows 98, proceed to step 2.

1. If installing on Windows 2000 or Windows NT, log on to Windows as the FALLS user with administrator rights.
2. Insert the FALLS Client for Windows CD into the CD-ROM drive. A Web browser displaying the readme.htm file opens.
3. If the file does not display, start Windows Explorer, locate the FALLS CD, and open the readme.htm file.

4. Read the text displayed in the readme.htm file, and ensure that the steps listed prior to the FALLS Installation Requirements section have been completed.
5. Select the appropriate .exe file for your operating system in the FALLS readme.htm file to begin the Sybase Open Client installation process:
  - Windows 2000 and Windows NT users, click **SybaseNTor2000ODBC.exe**.
  - Windows 98 users, click **SybaseWin9xODBC.exe**.
6. If the installation process detects that Sybase was previously installed on the workstation, you may receive an error message indicating that an existing copy of Sybase has been located.
7. Read the text displayed on the opening screen.
8. Click **Next**. The **File Download** dialog box displays.
9. Select **Run this program from its current location**.
10. Click **OK**. The **Administrator Check** dialog box displays. You must be logged on to Windows as the FALLS user with administrator rights.
  - a. If you are logged on appropriately, click **Yes**.
  - b. If you are not logged on appropriately, click **No** to cancel the installation, then return to step 1.

The installer checks your system for previous versions of Sybase Open Client.
  - c. If the installer finds a previous version, the Sybase **Open Client Found** dialog box displays. If Sybase Open Client 11.1.1 is already installed, click **Cancel**.
  - d. If no previous version is found, the **System OK** dialog box displays. Click **Continue**.
11. When prompted for an installation directory, accept the default if appropriate (\Syb), or enter another path in the text box.
12. Click **Next**.
13. Read the text displayed in the **FALLS SQL Server Name** dialog box.
14. Enter the name of the Sybase SQL server (Configuration Sheet, item 15).
15. Click **OK**.

16. Read the text displayed in the **IP Address of FALLS server** dialog box.
17. Enter the IP address of the FALLS Server *exactly* as indicated in item 14 of your Configuration Sheet. If you are unsure of the correct IP address, ask your network administrator or call the Customer Response Center before continuing.
18. Click **OK**.
19. Read the text displayed in the **TCP Port for Sybase FALLS server** dialog box.
20. Enter the Sybase SQL server port (Configuration Sheet, item 16). If you are unsure of the port, accept the default of 5000. Most SQL servers installed by Vaisala use port 5000.
21. Click **OK** to install the files.
22. Read the text displayed in the **Welcome** dialog box.
23. Click **Next**.
24. In the **Choose Destination Location** dialog box, verify the directory for the installation files, and click **Next**. If you are upgrading, it is recommended that you use the same directory.
25. In the **Select Program Manager Group** dialog box, enter **Sybase** in the text field, and click **Next**.
26. In the **Start Installation** dialog box, click **Next**.
27. A meter displays indicating the progress of the installation.
28. When the installation process is complete, read the text in the **Installation Complete** dialog box, and click **Finish**.
29. When the **tcslsh.exe** window displays (see Figure 8 below), verify the correct version and successful installation.



```
C:\PROGRA~1\SYB\bin\tcslsh.exe
Key: HKEY_LOCAL_MACHINE\SOFTWARE\ODBC\ODBCINST.INI\Sybase System 11
Key: HKEY_LOCAL_MACHINE\SOFTWARE\ODBC\ODBC.INI\gds2
Adding to PATH environment variable
Registry entries for Sybase OC/ODBC successfully installed.
SQL.INI server entry successfully installed.
--- press Return key to continue ---
```

**Figure 8** tcslsh.exe Window—Windows 2000

30. Click within the **tcsh.exe** window to make the window active and press the ENTER key.
31. You are returned to the FALLS browser. This ends the Sybase installation process.
32. Leaving the FALLS CD in the CD-ROM drive, restart your workstation.

**CAUTION**

It is important to properly restart the workstation. Windows does not load the ODBC drivers for FALLS without restarting the operating system.

33. You have now completed the Sybase Open Client and ODBC Driver installation. Continue with Chapter 7, Installing FALLS Client.

## CHAPTER 6

# TESTING SYBASE CONNECTIVITY

### Testing Sybase Open Client Connectivity

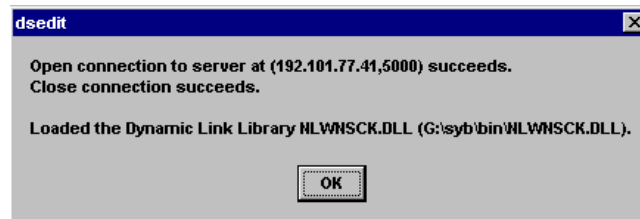
**NOTE**

If Sybase Open Client software has just been installed, and you have not already done so, you must restart the workstation before proceeding.

If you are using Windows 98, proceed to step 2.

1. If not already logged on, log on to Windows 2000 or Windows NT as the user who is running FALLS.
2. On the desktop, select **Start**, point to **Programs**, point to **Sybase**, and click **DSEdit** to start the Sybase DSEEDIT utility and display the **Select Directory Service** dialog box. If you cannot access the file:
  - a. On the desktop, select **Start** and click **Run** to display the **Run** dialog box, and enter **dsedit**.
  - b. Click **OK**.
3. Accept the default InterfacesDriver by clicking **OK**.
4. Select the server name from the **Server** list in the **DSEEDIT - InterfacesDriver** dialog box.
5. From the **Server Object** menu, select **Ping Server** to display the **Ping** dialog box.
6. Click **Ping** to ping the server and display a **dsedit** status message window.

- If the ping succeeded, the open and close connection messages will end with the word **succeeds** as shown in the **dsedit** dialog box in Figure 9 below.



**Figure 9** Status Message Indicating a Successful Ping Action

## NOTE

If you do not see messages similar to those in Figure 9 above, or the message does not display **Close connection succeeds**, contact the Customer Response Center.

7. After a successful test, click **OK** to close the message window.
8. Click **Done** to close the **Ping** dialog box.
9. From the **File** menu, select **Exit** to exit the DSEDIT utility.
10. Continue with section Testing MapInfo/ODBC/Sybase Connectivity.

## Testing MapInfo/ODBC/Sybase Connectivity

If you are using Windows 98, proceed to step 2.

1. If not already logged on, log on to Windows 2000 or Windows NT as the user who is running FALLS.
2. Start MapInfo. On the desktop, select **Start**, point to **Programs**, and click **MapInfo Professional 7.0**. After a few seconds, the MapInfo Professional application displays.
3. From the **File** menu, select **Open DBMS Connection** to display the **Select Data Source** dialog box.
4. Click **Machine Data Source**.
5. Select the name of your SQL server (Configuration Sheet, item 15) from the **Data Source Name** list.

6. Click **OK** in the **Select Data Source** dialog box.
7. Ensure that the **Server Name** displayed matches item 15 on your Configuration Sheet.
8. In the **Login ID** field, enter your SQL server account name (Configuration Sheet, item 17).
9. In the **Password** field, enter the corresponding password for that particular login ID.
10. Leave the **Database** field blank.
11. Click **OK**.
12. MapInfo 5.5 and 6.0 users:
  - a. The **Open DBMS Table - Step 1 of 4** dialog box displays with a successful connection.
  - b. Proceed to step 14.
13. MapInfo 7.0 users:
  - a. Nothing will display when a successful connection is established.
  - b. From the **File** menu, select **Open**.
  - c. From the **Files of Type** list, select your Sybase connection.
  - d. Double-click the **event\_types** table.
  - e. Click **OK**, and proceed to step 18.
14. Select **event\_types** from the **Table** list.
15. Click **Finish** in the **Open DBMS Table - Step 1 of 4** dialog box. The **Open DBMS Table - Step 4 of 4** dialog box displays.
16. Select any temporary directory, such as **C:\Temp**, from the **Save in** list.
17. Select **Browser** from the **Preferred View** list.
18. Click **Finish**.
19. If a warning displays that you are about to overwrite a file, click **OK** to proceed.

MapInfo displays a browser window containing the contents of the **event\_types** table downloaded from Sybase. You will see at least one row with an **event\_type\_id** of 1 and a **type\_name** of FAULT. If this does not occur, contact the Customer Response Center.

20. Testing the ODBC connection is now complete. From the **File** menu, select **Exit**. Continue with Chapter 7.

This page intentionally left blank.

## CHAPTER 7

# INSTALLING FALLS CLIENT

## Prerequisites

Prior to installing FALLS Client, ensure that the following items are installed on the FALLS workstation:

- HTML browser installed and properly configured. The browser displays the readme.htm file which includes the link for starting the FALLS installer.
- MapInfo
- Sybase with ODBC support
- SSH (secure shell) software, if you must access the Vaisala FALLS Server for data

FALLS Release Notes are included as a PDF file on the FALLS Client for Windows CD.

## Installing FALLS Client

### To install FALLS Client:

If you are using Windows 98, proceed to step 2.

1. If installing on Windows 2000 or Windows NT, log on to Windows as the FALLS user. For Windows 2000, administrator rights are required.

2. Insert the FALLS Client for Windows CD in the CD-ROM drive. The readme.htm file displays. If the browser does not start the readme.htm file automatically:
  - Open Windows Explorer, locate the FALLS CD, and double-click the readme.htm file.
3. Read the text displayed in the readme.htm file. After reading, scroll to the section titled **Installing FALLS**.
4. Double-click the **falls.exe** link to begin the FALLS installation process. If the link is broken, do one of the following:
  - Open Windows Explorer, locate the FALLS CD, and double-click the Falls.exe file.
  - On the desktop, select **Start** and click **Run** to display the **Run** dialog box.
  - Enter the CD-ROM drive letter (Configuration Sheet, item 7) followed by : \ **Falls.exe**.

For example, if the CD-ROM is drive D, enter:

**D: \ Falls.exe**
  - Click **OK** and proceed to step 5.
5. The **File Download** dialog box displays. Select **Run this program from its current location**. Click **OK**.
  - **Windows 98:** Click **OK**. FALLS will check for installed components. Continue with step 6.
  - **Windows 2000 and Windows NT:** An error message or a security warning may be displayed depending upon user settings. An **Administrator Rights Detected** dialog box displays when proper administrative rights have been detected. If you logged on as a FALLS user with administrator rights, click **OK** and continue with step 6. If you logged on as Administrator, log off, log on again as the intended FALLS user with administrator rights, and return to step 4 to restart the installation.
6. Read the text displayed in the **Welcome** dialog box.
7. Click **Next**. Read the text displayed in the **Choose Destination Location** dialog box.
8. Accept the default destination location or click **Browse** to select a different installation path.
9. Click **Next**. Read the text displayed in the **Backup Replaced Files** dialog box.

10. Select **Yes** and ensure that the installation path leads to the FALLS directory.
11. Click **Next**. Read the text displayed in the **Select Components** dialog box.
12. Select the optional components to install.
13. Click **Next**.
14. In the **Select Program Manager Group** dialog box, select the FALLS item or type **FALLS** in the text field.
15. Click **Next**. Read the text displayed in the **Start Installation** dialog box.
16. Click **Next** to start the FALLS installation process. A meter displays indicating the progression of the installation.
17. In the **Installation Complete** dialog box, click **Finish** to complete the installation process.
18. Restart the workstation. When the workstation restarts, the FALLS icon displays on the desktop (see Figure 10 below).



**Figure 10**    **FALLS Icon**

You have completed installation of the FALLS application. See the FALLS® Client User's Guide for instructions on starting and operating FALLS.

## Disabling the Windows Update Feature

### **CAUTION**

**Windows 98 and Windows 2000:** Before running FALLS, disable the Windows Update feature. Using the Windows Update feature after installing FALLS may overwrite .dll files and disable FALLS.

If you use the Windows Update feature after installing FALLS, and FALLS fails to function properly, contact the Customer Response Center. See Windows Help for specific information about the Windows Update feature.

This page intentionally left blank.

---

# INDEX

## C

|                          |      |
|--------------------------|------|
| checklist, installation  | 10   |
| Configuration Sheet form | 8–10 |
| configuring              |      |
| data source              | 37   |
| Port 22 for SSH          | 22   |
| connections              |      |
| hardware                 | 12   |
| software                 | 13   |
| connectivity testing     |      |
| firewall                 | 21   |
| MapInfo/ODBC/Sybase      | 38   |
| SSH                      | 21   |
| Sybase Open Client       | 37   |
| copyrights               | 4    |

## D

|                                  |    |
|----------------------------------|----|
| DBMS, meaning of                 | 16 |
| desktop icons                    |    |
| FALLS                            | 43 |
| PuTTY                            | 21 |
| disabling Windows Update feature | 43 |
| document conventions             | 2  |
| drive letter                     | 16 |
| DSEdit, configure data source    | 37 |

## E

|                |    |
|----------------|----|
| encryption key | 21 |
|----------------|----|

## F

|                          |       |
|--------------------------|-------|
| FALLS Client, installing | 41–43 |
| firewall                 | 22    |

## H

|                      |    |
|----------------------|----|
| hardware connections | 12 |
|----------------------|----|

## I

|                             |       |
|-----------------------------|-------|
| installing                  |       |
| FALLS Client                | 41–43 |
| MapInfo                     | 23–27 |
| MapInfo optional components | 29    |
| ODBC support                | 27–28 |
| SSH                         | 19–20 |
| Sybase Open Client          | 33    |
| IP address                  | 9     |

## L

|                            |        |
|----------------------------|--------|
| license agreement          | 5      |
| localhost port 5000        | 22     |
| logon                      |        |
| FALLS Client install       | 41     |
| MapInfo install            | 25     |
| Sybase Open Client install | 33     |
| test connectivity          | 37, 38 |

## M

|                             |       |
|-----------------------------|-------|
| manual revision             | 2     |
| manuals                     |       |
| conventions used            | 2     |
| related                     | 2     |
| revision history            | 2     |
| MapInfo                     |       |
| installing                  | 23–27 |
| optional components         | 29    |
| removing previous versions  | 24    |
| required product components | 25    |

## O

|                             |       |
|-----------------------------|-------|
| ODBC                        |       |
| installing driver           | 27–28 |
| meaning of                  | 16    |
| operating systems supported | 7     |

**P**

|                    |       |
|--------------------|-------|
| port configuration | 22    |
| PuTTY              |       |
| installing         | 19–20 |
| testing connection | 21    |

**R**

|                            |        |
|----------------------------|--------|
| readme.htm file            | 33, 42 |
| related manuals            | 2      |
| removing previous versions |        |
| MapInfo                    | 24     |
| SSH applications           | 19     |
| Sybase Open Client         | 33     |

**S**

|                                |    |
|--------------------------------|----|
| safety considerations          |    |
| general                        | 3  |
| software components            | 13 |
| SSH, testing connection        | 21 |
| Sybase Open Client, installing | 33 |

**T**

|                   |   |
|-------------------|---|
| technical support | 5 |
| trademarks        | 4 |

**U**

uninstalling. See removing previous versions

**W**

|                        |    |
|------------------------|----|
| warranty               | 5  |
| Windows Update feature | 43 |
| workstation IP address | 9  |